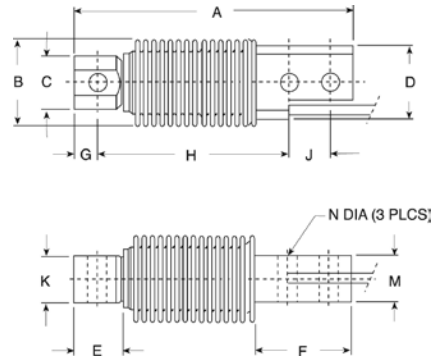




Picture is a representation of actual product



Specifications

Full Scale Output: 2.0 mV/V	Safe Overload: 150% Full scale	Seal Type: Welded-seal, IP68	Warranty: One-year limited warranty
Output Resistance: 355 ohms +/- 5	Rated Excitation: 10V DC (15V maximum)	Cable Length: 10 ft/3 m	Approvals: Available upon request
Input Resistance: 380 ohms +/- 10	Total Error: 0.02% Full scale	Cable Diameter: .220 polyurethane jacket	
Material/Finish: Stainless steel	Insulation Resistance: 2000 megohms	Cable Color Code: Blue+ Excitation Black.....- Excitation White+ Signal Red- Signal Green+ Sense Gray- Sense	
Temperature: Compensated range 14°F to 104°F/-10°C to 40° C	Deflection at Capacity: 5-500 kg ≤ .015 in/.4 mm		

Dimensions

RATED CAPACITY	A	B	C	D	E	F	G	H	J	K	M	N
kg/mm												
5-500	120.0	40.0	23.0	32.0	20.5	45.5	10.0	82.0	18.0	20.0	20.0	8.20
lb/inches												
11.0-1102.3	4.72	1.61	.91	1.26	.81	1.79	.39	3.23	.71	.79	.79	.32

Order Information

LOAD RATING	PART #	PRICE
5 kg (11.0 lb)	30165	Consult
10 kg (22.0 lb)	30166	Consult
20 kg (44.1 lb)	30167	Consult
50 kg (110.2 lb)	30168	Consult
100 kg (220.5 lb)	30169	Consult
200 kg (440.9 lb)	30170	Consult
250 kg (551.2 lb)	30171	Consult
500 kg (1102.3 lb)	36463	Consult

Interchangeable Products

MANUFACTURER	MODEL	PAGE #
Rice Lake Weighing Systems	RLHBB	144
Revere Transducers	SHB	270
Vishay Celtron	HBB	200
HBM	Z6	243

Weigh Module Available

MANUFACTURER	MODEL	PAGE #
Rice Lake Weighing Systems	1700HE	34